



Easily operated with the turn of the handle: tilt inwards at the top for child proof ventilation; turn and fully open for easy cleaning. Energy efficient and draft proof, with high sound protection, and secure locking.



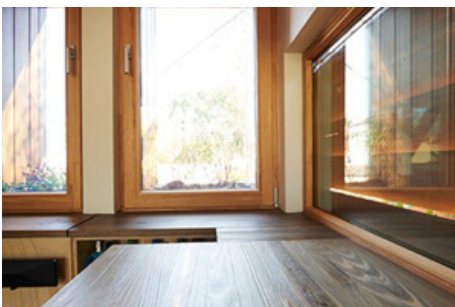
Specifications

- Timber frame thickness IV 68mm
- Pronounced joints
- Double glazed with 1x 14-20mm airgap, depending on glass thickness
- Choice of glass combinations
- Komfort+: low VOC spray-painted or stained in the colour of your choice
- Komfortline: primed and paint ready
- German tilt & turn hardware, multi-point locking, partly surface mounted
- Childproof available
- Seals to eliminate drafts
- Suited for bushfire areas up to and including BAL-29

Size:

- Minimum 600mm height x 420mm width
- Width up to 1200mm at min height of 1500mm, max 2100mm
- Height up to 2400mm at max width of 1000mm

WERS energy rating: from a very low 1.8
Ultimate strength N6/C4





Fixed panes enable you to enjoy a clear view without obstruction, acting as a picture frame for the scenery outside of the window. Often used in combination with openable windows or doors.



Specifications

- Timber frame thickness IV 68mm
- Pronounced joints
- Custom made to 2400mm height
- Double glazed with 1x 14-20mm airgap, depending on glass thickness
- Choice of glass combinations
- Komfort+: low VOC spray-painted or stained in the colour of your choice
- Komfortline: primed and paint ready
- Suited for bushfire areas up to and including BAL-29

Size:

- Width up to 4000mm
- Height up to 4000mm
- Maximum overall 11m²

WERS energy rating: from a very low 1.8





For special spaces where only a sliding window is suitable. Parallel-slide-tilt or lift-slide options are available. Highly energy efficient and draft proof with high sound protection. Custom made to size and finish.



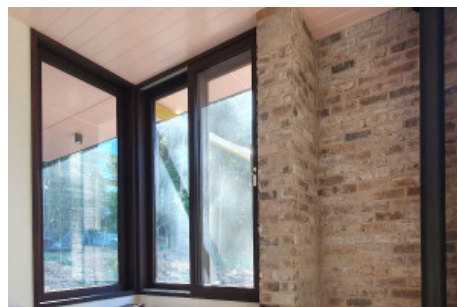
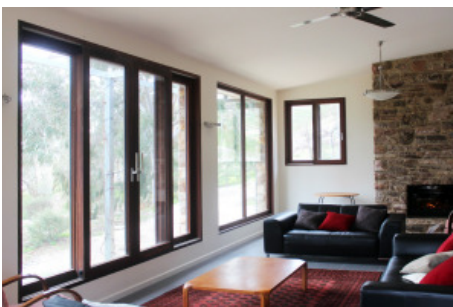
Specifications

- Victorian Ash or FSC® certified Manilkara Bidentata timber frame
- Frame thickness IV 68mm, pronounced joints
- Double glazed with 1x 14-20mm airgap, depending on glass thickness
- Choice of glass combinations
- Komfort+: low VOC spray-painted or stained in the colour of your choice
- Komfortline: primed and paint ready
- German lift-slide hardware, multi-point locking
- Seals to eliminate drafts
- Suited for bushfire areas up to and including BAL-29

Size:

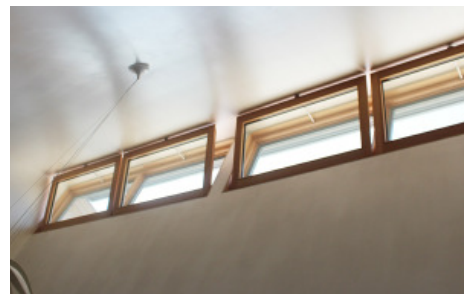
- Minimum height 750mm

WERS energy rating: from a very low 1.8





Tilting inwards at the top for ventilation, windows can be horizontal or vertical. The handle controls the mechanics and multi-point locking within the frame. Can be automated for hard to reach areas.



Specifications

- Timber frame thickness IV 68mm
- Pronounced joints
- Double glazed with 1x 14-20mm airgap, depending on glass thickness
- Choice of glass combinations
- Komfort+: low VOC spray-painted or stained in the colour of your choice
- Komfortline: primed and paint ready
- German tilt hardware fittings
- Seals and multi-point locking
- Can be automated with concealed chain drive
- Suited for bushfire areas up to and including BAL-29

Size:

- Maximum width 2400mm at maximum height of 700mm
- Height up to 2400mm at maximum width of 1500mm
- Height minimum 450mm

WERS energy rating: from a very low 1.8